

University of
Kent

Academies Trust
(UKAT)
Sixth Form

COURSES 2025/2026



CONTENTS

WELCOME	4	HEALTH AND SOCIAL CARE	18
SIXTH FORM ENTRY REQUIREMENTS.....	5	HISTORY	20
COURSES AT A GLANCE	6	ICT	20
APPLIED SCIENCE	8	MATHEMATICS.....	22
ART, CRAFT AND DESIGN	8	MEDIA.....	22
BIOLOGY	9	MUSIC	23
BUSINESS STUDIES – A LEVEL	10	PERFORMING ARTS.....	23
BUSINESS STUDIES – BTEC	10	PHOTOGRAPHY	24
CHEMISTRY	11	PHYSICS	24
CLASSICAL CIVILISATION	11	POLITICS	25
CREATIVE MEDIA PRODUCTION.....	12	PSYCHOLOGY.....	25
CRIMINOLOGY	12	RELIGIOUS STUDIES	26
DRAMA AND THEATRE	13	SOCIOLOGY.....	26
ECONOMICS	14	SPANISH.....	27
ENGLISH LITERATURE.....	14	SPORT	28
EXTENDED PROJECT QUALIFICATION	15	TEXTILE DESIGN	28
FILM STUDIES	15	ADDITIONAL INFORMATION	30
FRENCH	18		
GEOGRAPHY.....	18		

WELCOME TO THE UKAT SIXTH FORM

The UKAT Sixth Form is a popular, dynamic and forward-thinking post-sixteen provision offering a wide range of excellent opportunities for young people in Medway.

UKAT's curriculum is designed to provide students with diverse and varied curriculum pathways enabling them to access a broad range of high-quality destinations including university or work-based training. In recent years, over 90% of students at the UKAT Sixth Form have successfully obtained their first-choice university underpinned by excellent academic achievements across all subject areas.

Our two educational establishments, Chatham Grammar and Brompton Academy, provide high quality learning opportunities, enhanced by our relationship with the University of Kent. Our curriculum programmes are led by highly qualified and experienced academic staff across both sites. Collaborative learning across both academies enriches the experiences of our students, broadening their cultural horizons.

A bespoke Employability Scheme offers a unique opportunity for students to undertake work experience, internships and become directly involved with cutting edge research in key university departments, gaining greater insight in areas they wish to pursue in the future. Participating students are required to compile their own personal Global Passport, providing evidence of their experiences in the workplace, the new skills they have acquired as well as logging their 20 hours of volunteering within the Trust community.

The UKAT Sixth Form balances high academic and vocational aspirations alongside 360-degree pastoral care, enabling students to perform highly and succeed within a supportive caring environment. We aim for all students to develop new skills and qualities including a growth mindset, resilience, versatility, empathy and teamwork, which are all needed for our students to flourish both in their personal and professional life.

Success with us ensures that students will be equipped with both the academic qualifications and the cultural capital required to secure foundations for a bright future.

Anna Sargeant and Michelle Marshall
Assistant Principals



SIXTH FORM ENTRY REQUIREMENTS

To maintain high standards of academic achievement and ensure students are successful and progress onto their chosen career pathway, UKAT set basic entry requirements to study in our Sixth Form. In addition to these, subjects will set their own entry requirements as detailed in this booklet. Please ensure you are aware of these when applying for the Sixth Form as any offer of a place will be conditional to meeting the specified requirements.

Students choose a minimum of three subjects from the option blocks. For those considering taking four subjects, before submitting their option choices, they must consult either Mrs Marshall or Mr Harrison.

The duration of all our courses is two years with the exception of the Extended Project Qualification (EPQ) and Mathematical Studies which are one year courses.

PLEASE NOTE: UKAT RESERVES THE RIGHT TO WITHDRAW A COURSE IF THERE IS INSUFFICIENT INTEREST FROM APPLICANTS.

GENERAL REQUIREMENTS

A LEVEL COURSES

Minimum Grade 9-5 in 5 GCSEs including English and Mathematics.

Subject specific requirements as detailed in the booklet.

BTEC COURSES

Minimum Grade 9-4 in five GCSEs including English and Mathematics. Plus, a minimum Grade 4 in English or Mathematics and related subjects.

Subject specific requirements as detailed in the booklet.

PERFORMING ARTS, DRAMA AND THEATRE

The academic entry requirements for subjects chosen to study at A level or BTEC.

MUSIC, ART, PHOTOGRAPHY AND TEXTILES

A successful submission of a portfolio of work (Art/Photography/Textiles) in addition to the academic entry requirements for subjects chosen to study at A level or BTEC.



COURSE	LEVEL	ENTRY REQUIREMENTS
APPLIED SCIENCE	BTEC NATIONAL EXTENDED CERTIFICATE	Grade 9-4 in five GCSE's including a minimum Grade 5 in English and Mathematics. Plus, a minimum Grade 5 in Combined Science GCSE for the Level 3 BTEC Applied Science.
ART, CRAFT AND DESIGN	A LEVEL	Grade 9-5 in five GCSEs including English and Mathematics. Plus, a minimum Grade 6 in GCSE Art or Merit in BTEC Art or submission of portfolio.
BIOLOGY	A LEVEL	Grade 9-5 in five GCSEs with a minimum Grade 6 in both English and Mathematics. Plus, Grade 6's in GCSE Double Science, Triple Science or GCSE Biology.
BUSINESS STUDIES	A LEVEL	Grade 9-5 in five GCSEs including English and Mathematics. Plus, a minimum Grade 4 in English or Mathematics and related subjects.
BUSINESS STUDIES	BTEC EXTENDED CERTIFICATE	Grade 9-4 in five GCSEs including English and Mathematics.
CHEMISTRY	A LEVEL	Grade 9-5 in five GCSEs with a minimum Grade 6 in both English and Mathematics. Plus, Grade 6's in GCSE Double Science, Triple Science or GCSE Chemistry.
CLASSICAL CIVILISATION	A LEVEL	Grade 9-5 in five GCSEs including English and Mathematics. Plus, a minimum Grade 6 in GCSE History and English Language or GCSE English Literature.
CREATIVE MEDIA PRODUCTION	BTEC EXTENDED CERTIFICATE	Grade 9-4 in five GCSEs including English and Mathematics. Plus, a minimum Grade 4 in English or Mathematics and related subjects.
CRIMINOLOGY	DIPLOMA	Grade 9-5 in five GCSEs including English and Mathematics. Preferable to have achieved a minimum Grade 5 in GCSE Sociology, Psychology or Law.
DRAMA AND THEATRE	A LEVEL	Grade 9-5 in five GCSEs including English and Mathematics. Plus, a minimum Grade 5 in GCSE English Language or English Literature. Preferable to have achieved a GCSE/BTEC in a related subject area.
ECONOMICS	A LEVEL	Grade 9-5 in five GCSEs including English and Mathematics. Plus, a minimum Grade 6 in GCSE Mathematics.
ENGLISH LITERATURE	A LEVEL	Grade 9-5 in five GCSEs including English and Mathematics. Plus, a minimum Grade 7 in GCSE English Literature.
EXTENDED PROJECT	LEVEL 3	Grade 9-4 in five GCSEs including English and Mathematics. Plus, a minimum Grade 5 in GCSE English Language.
FILM STUDIES	A LEVEL	Grade 9-5 in five GCSEs including English and Mathematics. Plus, a minimum Grade 5 in GCSE English Language or English Literature. Preferable to have achieved a GCSE/BTEC in a related subject area.
FRENCH	A LEVEL	Grade 9-5 in five GCSEs including English and Mathematics. Plus, Grade 6 in GCSE French.
GEOGRAPHY	A LEVEL	Grade 9-5 in five GCSEs including a minimum Grade 5 in both English and Mathematics. Plus, a minimum Grade 6 in Geography.
HEALTH AND SOCIAL CARE	BTEC NATIONAL EXTENDED CERTIFICATE	Grade 9-4 in five GCSEs including English and Mathematics. Plus, a minimum Grade 4 in English and related subjects.
HISTORY	A LEVEL	Grade 9-5 in five GCSEs including English and Mathematics. Plus, a minimum Grade 6 in GCSE History or English Language or GCSE English Literature.

COURSE	LEVEL	ENTRY REQUIREMENTS
ICT	BTEC NATIONAL EXTENDED CERTIFICATE	Grade 9-4 in five GCSEs including English and Mathematics. Plus, a minimum Grade 4 in English or Mathematics and related subjects. Preferable to have studied a GCSE or BTEC in a related subject.
MATHEMATICS	A LEVEL	Grade 9-5 in five GCSEs including English and Mathematics. Plus, a minimum Grade 7 in GCSE Mathematics.
MEDIA	A LEVEL	Grade 9-5 in five GCSEs including English and Mathematics. Plus, a minimum Grade 6 in GCSE English Language or English Literature. Preferable to have achieved a GCSE/BTEC in a related subject area.
MUSIC	LEVEL 3 SUBSIDIARY DIPLOMA FOR MUSIC PRACTITIONERS	Grade 9-4 in five GCSEs including English and Mathematics. Plus, a minimum Grade 4 in English or Mathematics and related subjects.
PERFORMING ARTS	BTEC NATIONAL EXTENDED CERTIFICATE EQUIVALENT TO 1 A LEVEL	Grade 9-4 in five GCSEs including English and Mathematics. Plus, a minimum Grade 5 in GCSE Dance or Drama, or Level 2 Merit in BTEC Tech Award in Performing Arts (or equivalent vocational qualification).
PHOTOGRAPHY	A LEVEL	Grade 9-5 in five GCSEs including English and Mathematics. Plus, a minimum Grade 5 in GCSE Art or Merit in BTEC Art or submission of portfolio.
PHYSICS	A LEVEL	Grade 9-5 in five GCSEs including a minimum Grade 6 in English and Grade 7 in Mathematics. Plus, a minimum Grade 6 in GCSE Double Science, Triple Science or GCSE Physics.
POLITICS	A LEVEL	Grade 9-5 in five GCSEs including English and Mathematics. Plus, a minimum Grade 6 in GCSE English Language or Literature.
PSYCHOLOGY	A LEVEL	Grade 9-5 in five GCSEs including a minimum Grade 6 in English and Mathematics. Plus, a minimum Grade 6 or Merit in GCSE/BTEC Science.
RELIGIOUS STUDIES	A LEVEL	Grade 9-5 in five GCSEs including English and Mathematics. Plus, a minimum Grade 6 in GCSE English Language or Literature. Preferable to have studied GCSE Religious Studies.
SOCIOLOGY	A LEVEL	Grade 9-5 in five GCSEs including English and Mathematics. Plus, a minimum Grade 6 in GCSE English Language or Literature.
SPANISH	A LEVEL	Grade 9-5 in five GCSEs including English and Mathematics. Plus, a minimum Grade 5 in GCSE Spanish.
SPORT	BTEC NATIONAL EXTENDED CERTIFICATE	Grade 9-4 in five GCSEs including English and Mathematics. Plus, a minimum Grade 4 in English or Mathematics and a Science GCSE. Preferable to have achieved a GCSE/BTEC in related subject area.
TEXTILE DESIGN	A LEVEL	Grade 9-5 in five GCSEs including English and Mathematics. Plus a minimum Grade 6 in GCSE Art or linked subject or Merit in BTEC Art or submission of portfolio.

APPLIED SCIENCE

BTEC EXTENDED CERTIFICATE

ENTRY REQUIREMENTS

Grade 9-4 in five GCSE's including a minimum Grade 5 in English and Mathematics.

Plus, a minimum Grade 5 in Combined Science GCSE for the Level 3 BTEC Applied Science.

COURSE DESCRIPTION

Students will develop their knowledge of scientific principles through a practical approach. Students will have the opportunity to cover areas of laboratory science, forensic science, medical science, environmental science, and the biological, chemical and physical sciences, science investigative skills and the physiology of human body systems. This provides a route into a diverse range of scientific careers.

ASSESSMENT

Grades awarded are Distinction*, Distinction, Merit and Pass. Assessment comprises of two externally assessed components, a written examination and a scenario and practical investigation set and marked externally, worth 58% of the total qualification. Internally assessed assignments incorporate a variety of written and practical techniques equate to the remaining 42% of the course.

WHAT NEXT

Completion of this qualification will give between 16 and 56 UCAS points, to be used to gain entry onto a degree course or entry into the workplace. Applied Science can lead to further study and careers including health care, scientific research, pharmacy, optometry and forensic science.

THIS COURSE IS SUBJECT TO THE GOVERNMENT BTEC FUNDING REVIEW AND MAY BE SUBJECT TO WITHDRAWAL.

ART, CRAFT AND DESIGN

A LEVEL

ENTRY REQUIREMENTS

Grade 9-5 in five GCSEs including English and Mathematics.

Plus, Grade 6 in GCSE Art or Merit in BTEC Art or submission of portfolio.

COURSE DESCRIPTION

Students will experiment with a range of 2D and 3D media, processes and techniques, as well as a variety of traditional and new technologies as they complete the course over two years. Examining bygone and contemporary images, artefacts and resources from across the globe will be integral to understanding different styles, genres and traditions in their investigating and making processes. All units involve creative problem solving and students are encouraged to find alternative ways of finding a solution through experimental exploration.

ASSESSMENT

Grade A*-E awarded. The Coursework Portfolio and Personal Investigation are weighted at 60% of the A level, with an external component contributing to 40% of the overall mark. All units are internally assessed and externally moderated.

WHAT NEXT

Completion of this qualification will give between 16 and 56 UCAS points to gain entry onto a degree course or entry into the workplace. Art and Design can lead to further study and careers including fine art, graphics, interior design and set design.

BIOLOGY

A LEVEL

ENTRY REQUIREMENTS

Grade 9-5 in five GCSEs with a minimum Grade 6 in both English and Mathematics.

Plus, Grade 6's in GCSE Double Science, Triple Science or GCSE Biology.

COURSE DESCRIPTION

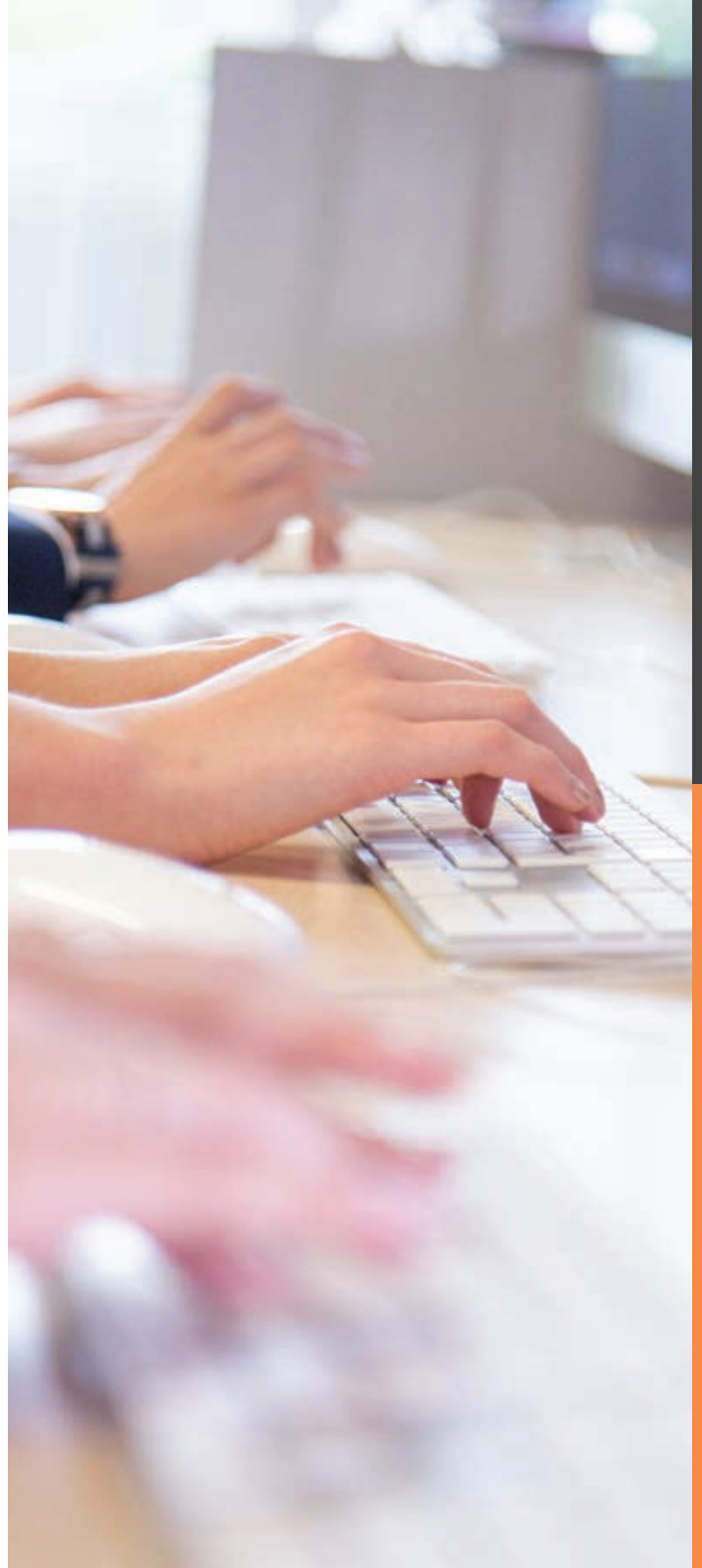
Students will study Biology in a modern context, where they will develop a greater appreciation for its importance in the wider world. There will be numerous opportunities to use practical experiences to link theory to reality, and develop students' practical skills. There are eight mandatory units: Biological molecules; Cells; Organisms exchange substances with their environment; Genetic information, variation and relationships between organisms; Organisms respond to changes in internal and external environments; Genetics, populations, evolution and ecosystems; The control of gene expression.

ASSESSMENT

Grade A*-E awarded. The mandatory units are externally assessed by three examinations. Each examination is 2 hours in length and worth approximately a third of the final A level grade.

WHAT NEXT

Completion of this qualification will give between 16 and 56 UCAS points to gain entry onto a degree course or entry into the workplace. Biology can lead to further study and careers including nursing, medicine, research, conservation and physiotherapy.



BUSINESS STUDIES – A LEVEL

A LEVEL

ENTRY REQUIREMENTS

Grade 9-5 in five GCSEs including English and Mathematics.

COURSE DESCRIPTION

In this extremely relevant, dynamic course you will learn all about starting a business and managing a large, multinational organisation. It is an exciting course which will give you an insight into the world of business and current affairs. The course will provide you with key life skills through talking to entrepreneurs and a variety of visits where you will experience the world of business.

On the course, you will study a broad range of topics including Marketing, Finance, Operations and Business Strategy, as well as the business environment in which businesses have to operate.

ASSESSMENT

Grades A*-E awarded. The A level course is assessed by three linear exams at the end of the course.

Paper 1: Marketing, people and global businesses (35%)

Paper 2: Business activities, decisions, and strategy (35%)

Paper 3: Investigating business in a competitive environment (30%)

WHAT NEXT

Completion of this qualification will give between 16 and 56 UCAS points, to gain entry onto a degree course or entry into the workplace. Business students will often take Accounting or Economics, but it equally goes alongside a number of other subjects such as Mathematics, Computing, English, Media, Graphics or Product Design.

BUSINESS STUDIES – BTEC

BTEC EXTENDED CERTIFICATE

ENTRY REQUIREMENTS

Grade 9-4 in five GCSEs including English and Mathematics.

COURSE DESCRIPTION

Students study the purposes of different businesses, their structure and the impact the external environment can have on their success and development. They will need to adopt an innovative and dynamic approach to business specific problem solving and will be expected to demonstrate their knowledge by applying business concepts to selected scenarios. This qualification provides a more vocational perspective, allowing students to interact with the business environment and experience real authentic business practices.

ASSESSMENT

Grades awarded are Pass, Merit, Distinction and Distinction* Two assignments set and marked internally. A task and written exam set and marked externally.

WHAT NEXT

Completion of this qualification will give between 16 and 56 UCAS points, to gain entry onto a degree course or entry into the workplace. Business studies can lead to further study and careers including Industry, Management and Finance.

THIS COURSE IS SUBJECT TO THE GOVERNMENT BTEC FUNDING REVIEW AND MAY BE SUBJECT TO WITHDRAWAL.

CHEMISTRY

A LEVEL

ENTRY REQUIREMENTS

Grade 9-5 in five GCSEs with a minimum Grade 6 in both English and Mathematics.

Plus, Grade 6's in Double Science, Triple Science or GCSE Chemistry.

COURSE DESCRIPTION

Students will study contemporary Chemistry, covering the following mandatory units: Development of practical skills; Foundations in Chemistry; Periodic table and energy; Core organic Chemistry; Physical Chemistry and transition elements and organic Chemistry and analysis.

ASSESSMENT

Grade A*-E awarded. The mandatory units are externally assessed by three examinations. The first two exams equate to 37% each with the final exam worth 26%. A "Practical endorsement in Chemistry" is assessed internally but is reported separately from the A level grade.

WHAT NEXT

Completion of this qualification will give between 16 and 56 UCAS points to gain entry onto a degree course or entry into the workplace. Chemistry can lead to further study and including careers in medicine, dentistry, pharmacy and chemical science.

CLASSICAL CIVILISATION

A LEVEL

ENTRY REQUIREMENTS

Grade 9-5 in five GCSEs including English and Mathematics.

Plus, a minimum Grade 6 in GCSE History and English Language or GCSE English Literature.

COURSE DESCRIPTION

A level Classical Civilisation has been designed to provide students with a broad, coherent and rewarding study of the literature and culture of the classical work. Classical Civilisation will help students to understand the legacy of this classical work.

Students will cover three components as below:

1. Content of The World of the Hero – students will study one of either Homer's Iliad or Odyssey, as well as Virgil's Aeneid. Students will develop knowledge and understanding of the epics themselves, the way in which they were composed, and the religious, cultural and social values and beliefs of its society.
2. Greek Religion – Some of the key topics covered include the nature of the Olympian gods, personal experience of the divine (mystery cults, the healing cult of Asclepius and the oracle at Dodona), religion and society.
3. Invention of the Barbarian – this topic allows students to explore how the Greeks saw themselves as distinct from their 'barbarian' neighbours. Topics include Greek identity, The Persian Wars and Greek unity.

WHAT NEXT

Classical Civilisation is a well-respected qualification that enables you to study a mixture of classics, history and literature. It develops a wide range of skills that are transferable to further study or the workplace such as analytical skills, communication, critical evaluation, cultural awareness and assessing and interpreting information.

CREATIVE MEDIA PRODUCTION

BTEC EXTENDED CERTIFICATE

ENTRY REQUIREMENTS

Grade 9-4 in five GCSEs including English and Mathematics.

Plus, a minimum Grade 4 in English or Mathematics and related subjects.

COURSE DESCRIPTION

Students acquire a range of production, design and research skills in preparation for future employment in the media industry, through direct experience. Assignments set within a vocational context through which students focus on developing relevant skills – photo manipulation and framing, film direction and production, media theory and analysis. Units cover: Unit 1 – Media representation; Unit 4 – Film pre-production; Unit 8 – Responding to a commission and Unit 10 – Film production.

ASSESSMENT

Grades awarded are Pass, Merit, Distinction and Distinction*. Two assignments set and marked internally. A controlled assessment responding to a set commission and an online exam on media representation are set and marked externally.

WHAT NEXT

Completion of this qualification will give between 16 and 56 UCAS points, to gain entry onto a degree course or entry into the workplace. Creative Media Production can lead to further study and careers including television, film, radio, sound recording and interactive games.

CRIMINOLOGY

DIPLOMA

ENTRY REQUIREMENTS

Grade 9-5 in five GCSEs including English and Mathematics.

Preferable to have achieved a minimum Grade 5 in GCSE Sociology, Psychology or Law.

COURSE DESCRIPTION

Students will gain a deeper understanding of why people commit crimes; the influences upon perceptions of crime; the variety of crimes committed and why some are unreported. By exploring these ideas through applying their learning to a range of case studies, both current and historical, the students will be equipped to consider how the application of their learning impacts on themselves, other individuals, employers, society and the environment.

Students will develop the skills to examine the legal process, reviewing the justice of verdicts in criminal cases, having followed through from the crime committed to the verdict. They will apply their understanding of criminality, criminological theories and the process of bringing an accused to court, to evaluate the effectiveness of social control to deliver criminal justice policy.

ASSESSMENT

Grade A*-E. Two units are externally assessed units by two 90 minute examinations. Two units are assessed internally with external moderation.

WHAT NEXT

Completion of this qualification will give between 16 and 56 UCAS points, to gain entry onto a degree course or entry into the workplace. Criminology can lead to further study and careers including some with aspects of the criminal justice sector e.g. the Probation Service or the police.

THIS COURSE IS SUBJECT TO THE GOVERNMENT BTEC FUNDING REVIEW AND MAY BE SUBJECT TO WITHDRAWAL.

DRAMA AND THEATRE

A LEVEL

ENTRY REQUIREMENTS

Grade 9-5 in five GCSEs including English and Mathematics. Plus, a minimum Grade 5 in GCSE English Language or English Literature. Preferable to have achieved a GCSE/BTEC in a related subject area.

COURSE DESCRIPTION

The subject content details the knowledge, understanding and skills that students are expected to develop throughout the course of study. The subject content for A level Drama and Theatre is divided into three components: *1. Drama and theatre 2. Creating original drama 3. Making theatre*. Guidance is also provided on the theatrical skills students will need to work on. In the practical components students may specialise in performing, lighting, sound, set, costume, puppets and/or directing.

ASSESSMENT

Practical, coursework and written exam.

WHAT NEXT

Completion of this qualification will give between 16 and 56 UCAS points, to gain entry onto a degree course or entry into the workplace. Drama can lead to further study and careers including Drama related careers, publishing, acting and PR.



ECONOMICS

A LEVEL

ENTRY REQUIREMENTS

Grade 9-5 in five GCSEs including English and Mathematics.

Plus, a minimum Grade 6 in GCSE Mathematics.

COURSE DESCRIPTION

Students will firstly develop their awareness and understanding of core economic models and then build on this by applying their knowledge to more complex concepts in both familiar and unfamiliar contexts. The course comprises of four themes: Introduction to markets and market failure – focusing on microeconomic concepts; The UK economy – performance and policies – with the focus on understanding the measures of economic performance; Business behaviour and the labour market – with the focus on the business economy and understanding business growth and objectives, as well as the impact of government intervention; A global perspective – with the focus on applying the concepts covered, to the global context whilst looking at international economics.

ASSESSMENT

Grade A*-E awarded. Assessment consists of three examinations at the end of the course. Two will equate to 70% and the third to 30% of the overall mark.

WHAT NEXT

Completion of this qualification will give between 16 and 56 UCAS points, to gain entry onto a degree course or entry in to the workplace, Economics can lead to further study and careers including business, marketing, law and government.

ENGLISH LITERATURE

A LEVEL

ENTRY REQUIREMENTS

Grade 9-5 in five GCSEs including English and Mathematics.

Plus, a minimum Grade 7 in GCSE English Literature.

COURSE DESCRIPTION

Students will further their exploration of texts, to appreciate literature at a higher level, studying a range of literature from sixteenth century Shakespeare to contemporary prose. Students will investigate an extensive range of views about texts in conjunction with their wider social and historical context. The texts will be in a range of formats: drama – *'A Streetcar Named Desire'* by Tennessee Williams and *King Lear* by William Shakespeare; prose – *'The Handmaids Tale'* by Margaret Atwood and *'Frankenstein'* by Mary Shelly as well as a collection of Romantic poetry from poets such as William Blake, Lord Byron and John Keats, as well as a collection of contemporary poems from *Poems of the Decade* featuring poets such as Patience Agbabi and Simon Armitage. Through their study, they will compare how narratives are constructed and the differing responses the writer can evoke from the reader.

ASSESSMENT

Grade A*-E awarded. Assessment consists of three examinations equating to 80% and one internally assessed piece of 2,500 – 3,000 words worth 20% of the final grade.

WHAT NEXT

Completion of this English Literature qualification will give between 16 and 56 UCAS points, to gain entry onto a degree course or entry into the workplace. English Literature can lead to further study and careers including broadcasting, journalism, teaching, advertising and marketing, and the law.

ONE YEAR COURSE

ENTRY REQUIREMENTS

Grade 9-4 in five GCSEs including English and Mathematics.

Plus, a minimum Grade 5 in GCSE English Language.

COURSE DESCRIPTION

Students have the opportunity to embark on a largely self-directed research project, enabling them to study a topic of choice in-depth for duration of the course. Students will develop into critical, reflective and independent students, whilst developing skills such as creativity, decision making and enterprise, as well as demonstrating initiative. Many of our students decide to explore a topic linked to their desired area of study for university. Skills linked to research and planning, critical thinking and analysis, synthesis and evaluation, project management and working independently, are highly valued by both universities and employers alike.

ASSESSMENT

Grade A*-E awarded. Students will be assessed on a portfolio of work (5,000 word research project), a production log and a final presentation, to be presented to an audience of peers and teachers.

WHAT NEXT

This qualification will give between 8 and 28 UCAS points, to gain entry onto a degree course or entry into the workplace. Many universities find the EPQ desirable as it is such excellent practice for the type of independent writing required by degree level learning.

A LEVEL

ENTRY REQUIREMENTS

Grade 9-5 in five GCSEs including English and Mathematics.

Plus, a minimum Grade 5 in GCSE English Language or English Literature.

Preferable to have achieved a GCSE/BTEC in a related subject area.

COURSE DESCRIPTION

Component 1: Varieties of film and filmmaking. Written examination: This component assesses knowledge and understanding of six feature-length films. Section A: Hollywood 1930-1990 (comparative study). Section B: American film since 2005/2012 (two-film study). Section C: British film since 1995 (two-film study). Component 2: Global filmmaking perspectives. Section A: Global film (two-film study). Section B: Documentary film. Section C: Film movements – Silent cinema. Section D: Film movements – Experimental film (1960-2001). Component 3: Production non-exam assessment.

ASSESSMENT

Grades A*-E awarded. Assessments comprise of two externally assessed examinations equating to 70% of the overall grade. The third component is internally assessed and externally moderated with a specific brief for students to follow.

WHAT NEXT

Completion of this qualification will give between 16 and 56 UCAS points, to gain entry onto a degree course or entry into the workplace. Media Studies can lead to further study and careers including media related careers, publishing, advertising and PR.





FRENCH

A LEVEL

ENTRY REQUIREMENTS

Grade 9-5 in five GCSEs including English and Mathematics.

Plus, Grade 6 in GCSE French.

COURSE DESCRIPTION

Students will study a film and a piece of French literature in-depth. Students will complete an Independent Research Project in French, forming the basis for a discussion in the speaking exam. Topics in year 1 are: Aspects of French-speaking society; current trends and artistic culture in the French-speaking world. In year 2, the topics are: Multiculturalism in French-speaking society and current issues and aspects of political life in the French-speaking world.

ASSESSMENT

Grade A*-E awarded. Assessment comprises of three examinations: Paper 1 – Listening and Reading is 2 hours and 30 minutes (42% of overall grade); Paper 2 – Writing is 2 hours (33%); Paper 3 – Speaking is approximately 25 minutes (25%).

WHAT NEXT

Completion of this qualification will give between 16 and 56 UCAS points, to gain entry onto a degree course or entry into the workplace. French can lead to further study and careers in tourism, teaching, international law or business.

GEOGRAPHY

A LEVEL

ENTRY REQUIREMENTS

Grade 9-5 in five GCSEs including a minimum Grade 5 in both English and Mathematics.

Plus, a minimum Grade 6 in Geography.

COURSE DESCRIPTION

Students will study a diverse range of topics that cover issues relevant to our world today. The emphasis is on the inter-relationships between and within the human and physical environments. The course is divided into three areas: Physical geography (including glacial landscapes, both water and carbon cycles and natural hazards); Human geography (changing places, global processes and governance and population and the environment). These two areas will ensure students develop a knowledge of locations; places; processes and environments; and an in-depth understanding of physical and human geography, and their interactions. The third area is a Non Examined Assessment (NEA) to be based on an independent geographical investigation.

ASSESSMENT

Grade A*-E awarded. Assessment comprises of three external examinations accounting for 80% of the final mark. The geographical investigation will equate to 20% of the final mark.

WHAT NEXT

Completion of this qualification will give between 16 and 56 UCAS points, to gain entry onto a degree course or entry into the workplace. Geography can lead to further study and careers including accountancy, travel, conservation, European studies and retail management.

HEALTH AND SOCIAL CARE

BTEC NATIONAL EXTENDED CERTIFICATE

ENTRY REQUIREMENTS

Grade 9-4 in five GCSEs including English and Mathematics.

Plus, a minimum Grade 4 in English and related subjects.

COURSE DESCRIPTION

Students will develop an understanding of the diverse and complex nature of the health and social care sector. Through the use of work related scenarios, students will explore the role of health and social care services in providing care and support to individuals. Students will cover the following units: Human lifespan development; Meeting individual care and support needs; Working in health and social care; and lastly, Physiological disorders and their care.

ASSESSMENT

Grades awarded are Pass, Merit, Distinction, and Distinction*. Assessment comprises of an externally assessed written exam and internally assessed assignment for each year of study.

WHAT NEXT

Completion of this qualification will give between 16 and 56 UCAS points, to gain entry onto a degree course or entry into the workplace. Health and Social Care can lead to further study and careers including nursing, as well as careers in related professions such as childcare and in NHS trusts.

THIS COURSE IS SUBJECT TO THE GOVERNMENT BTEC FUNDING REVIEW AND MAY BE SUBJECT TO WITHDRAWAL.



HISTORY

A LEVEL

ENTRY REQUIREMENTS

Grade 9-5 in five GCSEs including English and Mathematics.

Plus, a minimum Grade 6 in GCSE History or English Language or GCSE English Literature.

COURSE DESCRIPTION

Students will study the USA from 1865 to 1975, the making of a Superpower, and the making of modern Britain, 1951-2007. Students will develop their knowledge, critical thinking and understanding of the political, economic and social issues during these times. Students will develop a heightened awareness in explaining contemporary issues. The coursework element provides students with the opportunity to trace various themes and issues over one hundred years, using and evaluating a range of sources and interpretations.

ASSESSMENT

Grades A*-E awarded. The A level course is assessed by two final exams (breadth and depth study) worth 80% and one internally assessed piece of 4,500 words worth 20% of the overall grade.

WHAT NEXT

Completion of this qualification will give between 16 and 56 UCAS points, to gain entry onto a degree course or entry into the workplace. History can lead to further study or careers including law, finance, media, social policy and the civil service.

ICT

BTEC NATIONAL EXTENDED CERTIFICATE

ENTRY REQUIREMENTS

Grade 9-4 in five GCSEs including English and Mathematics.

Plus, a minimum Grade 4 in English or Mathematics and related subjects.

Preferable to have studied a GCSE or BTEC in a related subject.

COURSE DESCRIPTION

Students are introduced to high level IT topics, including those related to web, multimedia and software and network engineering. Alongside studying the creation of IT systems to manage and share information, students will develop their knowledge and understanding of working in the IT industry and its impact on society. Through scenario-based learning, students will develop their problem solving skills using systems and technology. The qualification consists of four units (three mandatory and one optional): Information Technology Systems; Data Modelling; Using Social Media in Business and Creating Systems to Manage Information.

ASSESSMENT

Grading: Pass, Merit, Distinction and Distinction*. Assessment is a combination of internal and external assessments. Externally set assessments consist of a written examination and a scenario based task worth 58% of the course.

WHAT NEXT

Completion of this qualification will give between 16 and 56 UCAS points, to gain entry onto a degree course or entry into the workplace. ICT can lead to further study and careers including IT, business and software/network engineering.

THIS COURSE IS SUBJECT TO THE GOVERNMENT BTEC FUNDING REVIEW AND MAY BE SUBJECT TO WITHDRAWAL.



MATHEMATICS

A LEVEL

ENTRY REQUIREMENTS

Grade 9-5 in five GCSEs including English and Mathematics.

Plus, a minimum Grade 7 in GCSE Mathematics.

COURSE DESCRIPTION

Students will build and extend their skills and techniques from GCSE. It enables them to understand mathematics in a way that promotes confidence, fosters enjoyment and provides a strong foundation for progress to further study. Students will study Pure Mathematics including algebra, trigonometry and calculus (66.67% of the qualification) and Applied Mathematics comprising of statistics and mechanics (33.33% of the qualifications) which will show how different areas of mathematics are connected and how they relate to other disciplines, the world of work and to situations in society in general.

ASSESSMENT

Grades A*-E awarded. Assessment consists of three externally-examined papers that carry equal weight: Papers 1 and 2 – Pure Mathematics and Paper 3 – Statistics and Mechanics.

WHAT NEXT

Completion of this qualification will give between 16 and 56 UCAS points, to gain entry onto a degree course or entry into the workplace. Mathematics can lead to further study and careers including accountancy, engineering, medicine and teaching.

MEDIA

A LEVEL

ENTRY REQUIREMENTS

Grade 9-5 in five GCSEs including English and Mathematics.

Plus, a minimum Grade 6 in GCSE English Language or English Literature.

Preferable to have achieved a GCSE/BTEC in a related subject area.

COURSE DESCRIPTION

Students will study the four key concepts in media and apply them to a range of different media texts including film, TV, radio, print and online media. Students will also study a range of theoretical approaches including postmodernism, narrative theory, social theory and various gender and post-colonial approaches to the world of media. The course offers students the opportunity to plan and produce short media texts including film and online texts. It consists of three components, two of which are exam based and the other based upon the principles of production.

ASSESSMENT

Grades A*-E awarded. Assessments comprise of two externally assessed examinations equating to 70% of the overall grade. The third component is internally assessed and externally moderated with a specific brief for students to follow.

WHAT NEXT

Completion of this qualification will give between 16 and 56 UCAS points, to gain entry onto a degree course or entry into the workplace. Media Studies can lead to further study and careers including media related careers, publishing, advertising and PR.

LEVEL 3 SUBSIDIARY DIPLOMA FOR MUSIC PRACTITIONERS

ENTRY REQUIREMENTS

Grade 9-4 in five GCSEs including English and Mathematics.

Plus a minimum Grade 4 in English or Mathematics and related subjects.

COURSE DESCRIPTION

The Level 3 Subsidiary Diploma for Music Practitioners provides a music industry qualification that will equip students with the skills, knowledge, and understanding for entry to employment in the music industry, or progression to further study at a higher level. The qualification aims to offer practical structured learning directly relevant to employment within the music industry. Students will take the performance pathway, meaning students are expected to perform effectively on an instrument and/or voice.

ASSESSMENT

Students will undertake one externally assessed core unit (Rehearsal and Performance). In addition, all students take an internally assessed core unit (Planning a Career in Music), together with a number of optional units including: Understanding Music Styles, Improving Instrumental Performance, Auditioning for Music, and Leading a Music Making Activity. All the units covered can develop skills and understanding of musicianship, repertoire, rehearsal, promotion, live/recorded performance, aspects of music technology, as well as an understanding of contextual issues relating to music style, audience; and the music industry.

WHAT NEXT

Completion of this qualification will give between 16 and 56 UCAS points, to gain entry onto a degree course or entry into the industry. Music can lead to further study and careers including composing, publishing and broadcasting, teaching and musical performance.

THIS COURSE IS SUBJECT TO THE GOVERNMENT BTEC FUNDING REVIEW AND MAY BE SUBJECT TO WITHDRAWAL.

BTEC NATIONAL EXTENDED CERTIFICATE EQUIVALENT TO ONE A LEVEL

ENTRY REQUIREMENTS

Grade 9-4 in five GCSEs including English and Mathematics.

Plus, a minimum Grade 5 in GCSE Dance or Drama, or Level 2 Merit in BTEC Tech Award in Performing Arts (or equivalent vocational qualification).

COURSE DESCRIPTION

The Pearson BTEC Level 3 National Extended Certificate in Performing Arts is designed for students with an interest in performing arts who want to continue their education through applied learning. Dance and Drama are the foundations of the course, and so it is suited to students who have a keen interest in one or both of these disciplines. Students will develop their technical skills as performers alongside their capacity to create, refine and reflect on the development of performance pieces. This qualification gives a broad introduction to the performing arts sector with an emphasis on core knowledge, and fundamental skills which are transferable across other sectors (including communication, presentation, physical and creative skills).

ASSESSMENT

Grades awarded are Pass, Merit, Distinction or Distinction*. Assessment comprises of four units of study – two are assessed by the centre and two are assessed externally. Due to the vocational nature of this course, students will be assessed on a regular basis and this features a balance of practical and written tasks.

WHAT NEXT

Completion of this qualification will give between 16 and 56 UCAS points, to gain entry onto a degree course or entry into the workplace. Performing Arts can lead to further study and careers including teaching and performing, but also equips students with transferable skills to other industries too.

PHOTOGRAPHY

A LEVEL

ENTRY REQUIREMENTS

Grade 9-5 in five GCSE's including English and Mathematics.

Plus, a minimum Grade 6 in GCSE Art or Merit in BTEC Art or submission of portfolio.

COURSE DESCRIPTION

Students will explore a range of photographic media, techniques and processes, and experience both new digital technologies and traditional processes of photography. Students are required to work in more than one area of photography for example, portraiture, landscape (working from the urban, rural or coastal environment), still life, experimental imagery, photographic installation, video and film. Through their development of more sophisticated photography skills, students' appreciation of how feelings and meanings can be conveyed and interpreted in images, as well as how images and artefacts relate to social, environment and cultural contexts.

ASSESSMENT

Grade A*-E awarded. Assessment comprises of two units for the A level course that are weighted at 60% for coursework and 40% for the externally assessed units. Units are marked against the four assessment objectives that are internally assessed and externally moderated.

WHAT NEXT

Completion of this qualification will give between 16 and 56 UCAS points, to gain entry onto a degree course or entry into the workplace. Photography can lead to further study and careers including architecture, design, animation and marketing and publicity.

PHYSICS

A LEVEL

ENTRY REQUIREMENTS

Grade 9-5 in five GCSEs including a minimum Grade 6 in English and Grade 7 in Mathematics.

Plus, a minimum Grade 6 in GCSE Science and Additional Science or in GCSE Physics.

COURSE DESCRIPTION

Students will study Physics in a range of contexts, building on their knowledge of the 'laws of physics' and applying their understanding to a range of problems ranging from sub-atomic particles to the entire universe. Students will refine mathematical and practical skills that are embedded in the six modules covered in the duration of the course: Development of practical skills in Physics; Foundations of Physics; Forces and motion; Electrons, Waves and photons; Newtonian World and Astrophysics and; particles and Medical Physics.

ASSESSMENT

Grade A*-E awarded. The mandatory units are externally assessed by three examinations. The first two exams equate to 37% each with the final exam worth 26%. A "Practical endorsement in Physics" is assessed internally but is reported separately from the A level grade.

WHAT NEXT

Completion of this qualification will give between 16 and 56 UCAS points, to gain entry onto a degree course or entry into the workplace. Physics can lead to further study and careers including engineering, medicine, medical technologies and research and development. To study Physics at university, A level Mathematics must also be studied.

POLITICS

A LEVEL

ENTRY REQUIREMENTS

Grade 9-5 GCSEs including English and Mathematics.

Plus, a minimum Grade 6 in GCSE English Language or English Literature.

COURSE DESCRIPTION

Students will investigate in detail how people and politics interact. They will explore the emergence and development of the UK's democratic system and the similarities, differences, connections and parallels between direct and indirect democracy. Students will also be introduced to the set of rules governing politics in the UK, and the UK constitution, which is different in nature from most of the rest of the world. Students will explore the US Constitution and the arguments surrounding this guiding document of US democracy. Students will compare and contrast politics and institutions in the US with those in the UK. They will gain a wider understanding of politics as a discipline, underpinned by the theoretical concepts of comparative politics.

ASSESSMENT

Grade A*-E awarded. Assessment comprises of three examinations at the end of the course, each worth a third of the final grade: Paper 1 – UK Politics; Paper 2 – UK Government; Paper 3 – Comparative Politics (USA).

WHAT NEXT

Completion of this qualification will give between 16 and 56 UCAS points, to gain entry onto a degree course or entry into the workplace. Government and Politics can lead to further study and careers including, law, economics, finance, government, and management.

PSYCHOLOGY

A LEVEL

ENTRY REQUIREMENTS

Grade 9-5 in five GCSEs including a minimum Grade 6 in English and Mathematics.

Plus, a minimum Grade 6 or Merit in GCSE/BTEC Science.

COURSE DESCRIPTION

Students will study the main approaches to Psychology to gain an understanding and insight in to the science concerned with the study of mind and behaviour. Students will develop their analytical thinking skills through a scientific approach to their learning. The course comprises of three units: Unit 1 – Social Influence, Memory, Attachment and Psychopathology; Unit 2 – Approaches in Psychology, Biopsychology, Research Methods; Unit 3 – Issues and Debates in Psychology and three optional topics, such as Relationships, Schizophrenia and Aggression (optional topics are subject to change).

ASSESSMENT

Grade A*-E awarded. Assessment comprises of three examinations linked to each unit and each are worth 33.3% of the final grade. Each exam is two hours long. The exams will consist of multiple choice, short-answer and extended writing questions.

WHAT NEXT

Completion of this qualification will give between 16 and 56 UCAS points, to gain entry onto a degree course or entry into the workplace. Psychology can lead to further study and careers including business, accounting, social work, law and medicine.

RELIGIOUS STUDIES

A LEVEL

ENTRY REQUIREMENTS

Grade 9-5 in five GCSEs including English and Mathematics.

Plus, a minimum Grade 6 in GCSE English Language or English Literature.

Preferable to have studied GCSE Religious Studies.

COURSE DESCRIPTION

Students will explore philosophical approaches to the soul, reality, existence and nature of God, and language. They will look at sexual ethics, euthanasia, the language of ethics and business ethics. Finally, they will consider the nature and presentation of Jesus, feminism and the Bible, and knowledge and revelation of God. Throughout the course, students will adopt an enquiring, critical and reflective approach to their studying of the three components: Philosophy of religion; Religion and Ethics; and Developments in religious thought.

ASSESSMENT

Grade A*-E awarded. Assessment consists of three 2 hour examinations linked to the three course components, each equating to a third of the overall A level.

WHAT NEXT

Completion of this qualification will give between 16 and 56 UCAS points, to gain entry onto a degree course or entry into the workplace. Religious Studies can lead to further study and careers working with people in caring work, teaching, journalism, publishing, policing and health.

SOCIOLOGY

A LEVEL

ENTRY REQUIREMENTS

Grade 9-5 in five GCSEs including English and Mathematics.

Plus, a minimum Grade 6 in GCSE English Language or English Literature.

COURSE DESCRIPTION

Students' study will focus on the society we live in, and how social characteristics can affect the life chances and experiences of individuals. They will develop their critical thinking and understanding about the world and their place in it. Students will study the impact the individual and society have on families and education. Students will examine society from different perspectives such as Marxism or Feminism and contrasting right wing approaches. Finally, students will study the 'Sociology of Crime and Deviance' and learn how sociologists, scrutinise and rationalise criminal behaviour.

ASSESSMENT

Grade A*-E awarded. Assessment consists of three 2 hour examinations, each linked to two course components, each equating to a third of the overall A level. Questions are a mixture of short answers and essays, but predominantly essay based.

WHAT NEXT

Completion of this qualification will give between 16 and 56 UCAS points, to gain entry onto a degree course or entry into the workplace. Sociology can lead to further study and careers including education, law and management, social work and international relations.

SPANISH

A LEVEL

ENTRY REQUIREMENTS

Grade 9-5 in five GCSEs including English and Mathematics.

Plus, a minimum Grade 5 in GCSE Spanish.

COURSE DESCRIPTION

Students will study a film and a piece of Spanish literature in depth. Students will complete an Independent Research Project in Spanish, forming the basis for a discussion in the speaking exam. Topics covered in year 1 are: Aspects of Spanish-speaking society and artistic culture in the Spanish-speaking world. In year 2, the topics are: Multiculturalism in Spanish-speaking society and aspects of political life in the Spanish-speaking world.

ASSESSMENT

Grade A*-E awarded. Assessment comprises of three examinations: Paper 1 – Listening and Reading is 2 hours and 30 minutes (50% of overall grade); Paper 2 – Writing is 2 hours (20%); Paper 3 – Speaking is approximately 25 minutes (30%).

WHAT NEXT

Completion of this qualification will give between 16 and 56 UCAS points, to gain entry onto a degree course or entry into the workplace. Spanish can lead to further study and careers with tourism, teaching, international law or business.



BTEC NATIONAL EXTENDED CERTIFICATE

ENTRY REQUIREMENTS

Grade 9-4 in five GCSEs including English and Mathematics.

Plus, a minimum Grade 4 in English or Mathematics and a Science GCSE.

Preferable to have achieved a GCSE/BTEC in related subject area.

COURSE DESCRIPTION

Students will develop a knowledge and understanding of the importance of making connections between body systems in response to participation in exercise/sport, enabling them to recommend training methods and produce individualised fitness programmes. The expectation is that they will take part in application and interview assessment activities for a selected career pathway in the sports industry. The course comprises of three mandatory units: Anatomy and Physiology; Fitness Training and Programming for Health, Sport and Wellbeing and professional development in the sports industry. Plus, a fourth optional unit to be determined.

ASSESSMENT

Grades awarded are Pass, Merit, Distinction and Distinction*. Assessment comprises of two externally set and marked units completed under supervised conditions worth 67% of the qualification. Internal assessments comprise of a series of practical and written assignments.

WHAT NEXT

Completion of this qualification will give between 16 and 56 UCAS points to gain entry onto a degree course or entry in to the workplace. Sport can lead to further study and careers including coaching and sport and healthcare relating to sports such as physiotherapy.

A LEVEL

ENTRY REQUIREMENTS

Grade 9-5 in five GCSEs including English and Mathematics.

Plus a minimum Grade 6 in GCSE Art or linked subject or Merit in BTEC Art or submission of portfolio.

COURSE DESCRIPTION

Students will explore a range of visual and tactile representations in textiles. Students are required to work in more than one area of Textile Design for example, fashion, printed and/or dyed, constructed, installed and expressive textiles. Through their growing understanding of textile design, students' appreciation of how feelings and meanings can be conveyed and interpreted by selection and manipulation of fibres and/or fabrics and how these relate to social, environmental and cultural contexts.

ASSESSMENT

Grade A*-E awarded. Assessment comprises of two units for the A level course weighted at 60% for the Personal Investigation (coursework) and 40% for the Controlled Assignment. Units are marked against the four assessment objectives that are internally assessed and externally moderated.

WHAT NEXT

Completion of this qualification will give between 16 and 56 UCAS points, to gain entry onto a degree course or entry into the workplace. Textile Design can lead to further study and careers including fashion design, textile design, printmaking and teaching.



ADDITIONAL INFORMATION

All UKAT Sixth Form students have access throughout the academy day to excellent facilities and resources at both UKAT Sixth Form hub sites including:

- New build Sixth Form Centre at the Chatham Grammar Hub comprising a new common room
- Recently revamped common room at Brompton Academy Hub
- Free transport between sites at lesson movement time
- High quality IT facilities
- Access to affordable iPad purchase scheme
- Cashless catering facilities
- Small group tutoring with University of Kent ambassadors
- Access to University of Kent research facilities
- Financial support through Post 16 Bursary

University of
Kent | Academies Trust
(UKAT)
Sixth Form

